

INFORMATION FOR APPLICANTS

Associate Vice-President, International



JAMES COOK
UNIVERSITY
AUSTRALIA



jcu.edu.au



1ST

to achieve
EduTrust Star
in Singapore¹

NO. 52

in the world
for the UN Sustainable
Development Goal of good
health and wellbeing²

TOP 400

Universities in the world³

6

highly cited researchers⁴

Contents

| | |
|--|----|
| Welcome from the Chief Marketing Officer | 3 |
| Corporate Strategy | 4 |
| JCU by numbers | 5 |
| JCU Singapore..... | 6 |
| JCU Townsville..... | 8 |
| JCU Cairns..... | 10 |
| JCU Brisbane | 12 |
| Research excellence..... | 14 |
| Research centres..... | 16 |
| Study centre network..... | 20 |
| Organisational structure..... | 23 |
| JCU Facilities | 24 |
| History of JCU: Celebrating 50 years | 26 |
| Key statistics | 31 |
| Associate Vice-President, International - Position Overview..... | 33 |

**RESPECT.
NOW.
ALWAYS.**

James Cook University values and celebrates the diversity of our community, and is committed to ensuring our learning and working environment is safe and welcoming.

JCU is proud to be part of the Respect. Now. Always. campaign – a national initiative led by Universities Australia to highlight our determination to ensure our students and staff are safe from discrimination and sexual harassment. Further information about the campaign and free services available for students can be found at jcu.edu.au/sew



Our commitment to Australian Aboriginal and Torres Strait Islander peoples

James Cook University is committed to building strong and mutually beneficial partnerships that work towards closing the employment, health and education gap for Australian Aboriginal and Torres Strait Islander peoples.

Our students come from many backgrounds, promoting a rich cultural and experiential diversity on campus.

We acknowledge the Aboriginal and Torres Strait Islander peoples as the Traditional Custodians of the Australian lands and waters where our staff and students live, learn and work. We honour the unique cultural and spiritual relationship to the land, waters and seas of First Australian peoples and their continuing and rich contribution to James Cook University (JCU) and Australian society. We also pay respect to ancestors and Elders past, present and future.



Kassandra Savage (JCU Alumni),
'Coming Together and Respecting Difference',
acrylic on canvas, 2014, 90cm x 90cm.



JAMES COOK
UNIVERSITY
SINGAPORE

www.jcu.edu.sg

JAMES COOK UNIVERSITY

JAMES COOK UNIVERSITY

IN

STOP
SECURITY CHECK



Welcome from the Chief Marketing Officer

Thank you for expressing interest in the position of Associate Vice-President International with James Cook University (JCU). We are proud to be a unique university with campuses in both Australia and Singapore, where we have built a reputation for our commitment to making a difference both locally and globally.

James Cook University grew from humble beginnings, established as the University College of Townsville, under the University of Queensland, more than 60 years ago. In 1970, JCU was named Queensland's second university and tasked with a mission to serve the regional, rural and remote communities of northern Australia and the Tropics.

Today, JCU is a world-class institution ranked in the top 2% of universities worldwide¹. As a research-intensive university with its headquarters in Northern Queensland, our commitment extends to the diverse communities of Singapore. JCU's Singapore Campus was established in 2003 to offer a broad range of degrees and research opportunities.

JCU Singapore further strengthens our tropical mission, allowing us to seize opportunities across the dynamic Asia-Pacific region. JCU is the first Australian University in Singapore to achieve Branch Campus status and has been awarded the highest recognition for quality, the EduTrust Star and Singapore Quality Class Star.

The Associate Vice-President International is responsible for managing JCU's international recruitment, conversion, global mobility and partnership functions across Australia and Singapore. Their achievements will be bolstered through the integration of the JCU Australia and Singapore marketing teams, creating a powerhouse of responsive and insight-driven marketing, sales and recruitment activities, with the overarching goal of improving JCU's international market share.

If you're intrigued by the opportunities presented by the dynamic higher education space and are keen to contribute to JCU's mission and values, we encourage you to apply for this position. I, and the entire team at JCU, look forward to hearing from you, and wish you well on the journey you are about to begin.

Regards,

Dr. David Craig
Chief Marketing Officer

Corporate Strategy

Creating a brighter future for life in the Tropics and beyond, through education and research that makes a difference locally, and globally.

Context

An international University as reflected in our people, our places, and our research, James Cook University takes pride in being recognised as a leading tertiary institution. The University consistently delivers outstanding student outcomes with high employability for our graduates.

We are unique among Australian universities, woven into the intellectual, economic and social fabric of our communities and set amid irreplaceable ecosystems and cultures. We provide a practical and experiential, research-rich learning environment for our students, fostering their professional expertise and intellectual curiosity.

Values

Our values are the qualities that define what we stand for. They capture the standards that we live by and guide the way we behave and work together.

Authenticity

Working in, with and for the communities in which we are based, we are responsive to their needs and champions for transformative education and research. In doing so we act ethically, transparently and with generosity of spirit.

Excellence

Our global reputation for cutting-edge research and education is built upon on our responsiveness to the unique characteristics of the places in which we work and our commitment to excel in everything we do.

Integrity

We hold ourselves to the highest standards of professional and scientific conduct. We are proactive in identifying and acting on barriers to inclusiveness and diversity in all aspects of university life.

Respect

JCU fosters a respectful environment for robust debate and a diversity of ideas, engaging our staff, students and the broader community in a supportive, culturally respectful and connected community of higher learning.

What matters to us

We're committed to the continued success and wellbeing of students, our people, our communities and local economies.

Our Education - Knowledge has the power to change lives.

Our Research - A catalyst for innovation and knowledge generation.

Our People - Our staff, students and the communities we serve.

Our Place - The Tropics and beyond.

Priorities

These describe our key areas of strategic focus and the core capabilities we will harness to help deliver on the University's objectives.

Transformative Education

JCU measures itself by the success of our students. Our curriculum emphasises experiential learning, student agency, and technology enhanced learning; assuring seamless integration and equivalency across delivery sites and modes.

Effective pathway and student support programs extend access and widen participation in higher education, including regional, remote, Indigenous, first-in-family, and international students.

All students gain lifelong learning skills and enduring connections with our University.

Impactful Research

Our global position as a world-class research university capitalises on existing strengths and expertise, and focuses our investment on emerging challenges and opportunities for our region, the Tropics and beyond.

We provide research excellence, innovation and commercialisation opportunities that deliver impact to our communities and end-users. We provide real world solutions to the problems of today and tomorrow.

Empowering Our People

The accomplishments of our University are an aggregate of the achievements and success of our people.

We are focused on ensuring that our staff and students are valued and enabled through an inclusive and respectful learning environment, and that our workforce reflects our strategic priorities.

A Civic University

Through our relationship and partnerships with our communities, we create opportunities and address local challenges.

As a place-based knowledge partner, the University delivers education, research and policy advice to government. We influence policy, strategic planning and integrated responses for the social, cultural and economic benefit of our Place.

Securing Our Future

To create opportunities and enduring benefits for our region and beyond the University must be financially sustainable.

We ensure that our actions today enhance the range of social, cultural, environmental and economic options available to future generations.

JCU by numbers

20,308
STUDENT
ENROLMENTS

4,119
EMPLOYEES

REVENUE:
\$559
MILLION

ECONOMIC IMPACT
IN QUEENSLAND:
\$827
MILLION

STUDENTS FROM
111
COUNTRIES

ON-CAMPUS
ACCOMMODATION
FOR OVER
1,600
STUDENTS

ANNUALISED HUMAN
CAPITAL IMPACT OF JCU'S
2016 GRADUATES:
\$102
MILLION¹

\$1.3^{Bn}
ASSETS¹

6
HIGHLY CITED
RESEARCHERS²

25
JCU SPECIALISED
RESEARCH CENTRES
AND INSTITUTES

TOP
10
IN AUSTRALIA
FOR ECOLOGY³

TOP
150
IN THE WORLD
FOR HOSPITALITY AND
TOURISM MANAGEMENT³

'WORLD CLASS
OR HIGHER'
IN **83%**
OF RESEARCH FIELDS⁴

RESEARCH
CONNECTIONS TO
124
COUNTRIES

TOTAL RESEARCH INCOME:
\$81.8
MILLION⁵

NO.
1
IN AUSTRALIA
FOR SUSTAINABLE
EDUCATION⁶

¹ 2017 JCU Economic Impact and Human Capital Report. ² 2023 Web of Science. ³ 2023 ShanghaiRanking Global Ranking of Academic Subjects
⁴ Excellence in Research for Australia (ERA) 2018. ⁵ 2021 JCU Planning, Performance and Analytics. ⁶ QS Sustainability Rankings 2023.

JCU Singapore

A constantly evolving city, Singapore is at the forefront of global health, technology, and economic advancement. JCU Singapore features modern facilities, collaborative learning spaces, and internationally renowned lecturers.

jcu.edu.sg



Our locations

JCU Singapore

JCU Singapore was established in 2003, bringing programs direct from Australia and resident senior academic staff from JCU to ensure academic quality. JCU Singapore has achieved the highest level of accreditation from the Singapore Government, the EduTrust Star.

JCU Singapore offers a wide range of courses including business, education, environmental science, game design, hospitality and tourism management, and healthcare sciences.

Students have opportunities to study in Australia with the Inter-campus Mobility Program, as well as overseas with the Study Abroad Program.

Singapore is a distinctive, thriving place. With a total land area of just 646 square kilometres, it is a compact city-state brimming with the vibrancy of over 5 million people. As the largest port in Southeast Asia, Singapore is one of the busiest ports in the world and the city-state excels in trade and tourism. You will find a diverse population of Chinese, Malay, Indian, and other ethnic groups, covering a wide spectrum of religions, cultures, and languages. The synergistic mix of ethnic groups offers international students and visitors a wide range of choices for living, working, studying, and discovering in Singapore.



Singapore fast facts

As an ever-evolving city, Singapore is at the forefront of global health, technology and economic advancement.



Climate

Dry season (March–August)

25°–32°C/77°–90°F

Wet season (September–February)

24°–32°C/75°–90°F

Food

There is easy access to fresh fruit, vegetables, meat, and seafood. Singapore enjoys a large range of ethnic cuisines, as well as plenty of vegetarian, vegan, and halal options.

Population

5.9 million (city), 4,526 (JCU)

Transport

Two MRT (train) stations are a 10-minute walk from campus, and there are three bus stops within short walking distance to the campus.

Places of worship

A prayer room is available for students to use.

Medical

On-campus facilities include the JCU Singapore Psychology Clinic. There is a hospital 15 minutes from the campus, as well as several medical clinics around the city.

Sporting facilities

A wide range of sporting facilities are on campus, including a gymnasium, basketball and tennis courts, and a multi-purpose sports hall.

Sources: Department of Statistics Singapore 2023;
2022 JCU numbers from COGNOS 27/11/2023

JCU Townsville

Study in a unique environment where world-class facilities, natural wonders, and vibrant student life come together. JCU Townsville is a teaching, research, and community hub with a range of state-of-the-art equipment and resources for students to make the most of their time at university across two locations: Bebegu Yumba campus, Douglas and the City campus.



Our locations

JCU Townsville

Students access exceptional teaching and research facilities at JCU Townsville. They develop professional skills, engage with peers, and learn from leading lecturers at JCU Science Place. The world-class facility features sophisticated teaching areas, collaborative lecture theatres, technology-enabled active learning spaces, and fully equipped research labs. Students can also access research facilities and learning support services at the Eddie Koiki Mabo Library. The library hosts exhibitions, providing opportunities to access and appreciate different artworks and artefacts. Students enjoy a rich social life and can join a range of clubs and societies. From sports through to culture, there is a club to suit any interest.

JCU Townsville, Bebegu Yumba campus, Douglas is surrounded by natural bush and parkland. The campus houses around 1,400 students in colleges and halls of residence.

Immerse yourself in the heart of Townsville at the JCU Townsville, City campus. Located in Townsville's CBD and boasting a range of innovative spaces and state-of-the-art facilities, the City campus delivers services for the university, students, businesses, and community organisations.

Townsville is small enough to escape the hustle and bustle of big city life, but large enough to boast a range of facilities. Students can make the most of the great outdoors through rainforest hikes, mountain biking, and snorkelling or scuba diving on the Great Barrier Reef.



Townsville city, from Castle Hill, overlooking Cleveland Bay and east to Magnetic Island.

Townsville fast facts

Townsville is Australia's largest tropical city and a thriving coastal port. Magnetic Island and the Great Barrier Reef are on Townsville's doorstep. The Gulf Savannah region and outback country towns lie to the west. Townsville is famous for an average of 320 days of sunshine per year, so there are endless opportunities to enjoy the outdoors.



Climate

Summer (December–February)

24°–32°C/75°–90°F

Hot and humid

Winter (June–August)

13°–26°C/56°–79°F

Mild and dry

Food

Easy access to an abundance of fresh local foods and cuisines from around the world.

Population

234,283 (city), 11,128 (JCU)

Transport

Bus to and from campus, car, bicycle, international airport.

Places of worship

JCU's Multifaith Chaplaincy Centre is available as a free facility for you to practise your faith.

Medical

On-campus hospital, medical clinic, psychology clinic, physiotherapy clinic, dental clinic, occupational therapy clinic, speech pathology clinic, exercise physiology clinic, and veterinary clinic.

Banks

Westpac, Commonwealth Bank, and RediATM facilities on campus.

Campus

JCU Townsville, Bebegu Yumba campus, Douglas, is Australia's largest university campus, approximately a 20-minute drive from the city centre. Study facilities can also be accessed at the Townsville City campus.

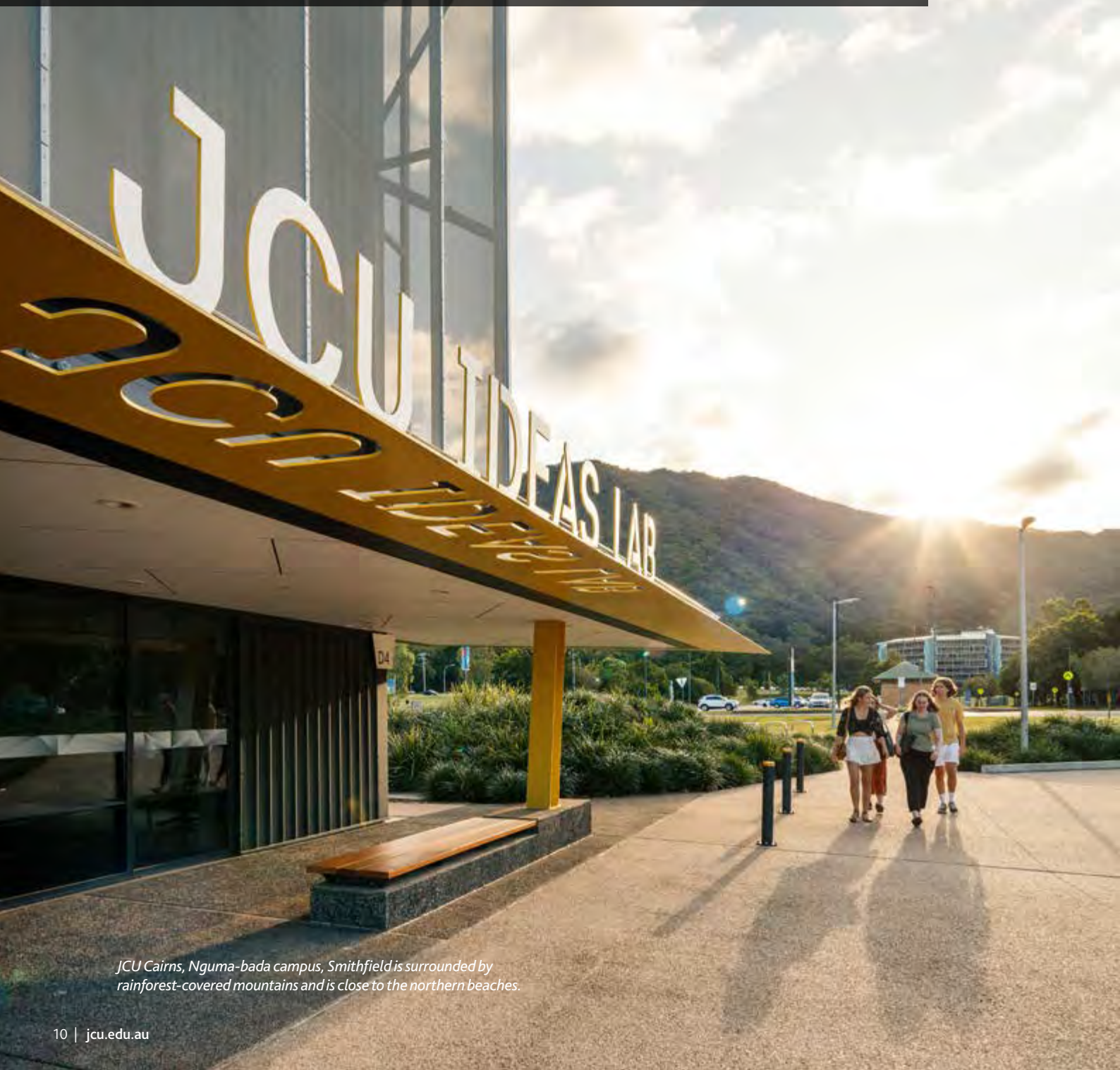
On-campus sport

Gymnasium, basketball courts, tennis courts, squash courts, netball courts, rugby and soccer fields, hockey fields, cricket pitches and swimming pool.

Sources: ABS 2021 Census (area 318);
2022 JCU numbers from COGNOS 27/11/2023

JCU Cairns

Explore some of the most interesting places on Earth. Discover unrivalled research locations and access World Heritage listed natural environments. Learn in modern facilities at Nguma-bada campus, Smithfield and Bada-jali campus, City. Students build valuable professional networks while developing the skills and knowledge to make a difference.



JCU Cairns, Nguma-bada campus, Smithfield is surrounded by rainforest-covered mountains and is close to the northern beaches.

Our locations

JCU Cairns

Students at JCU Cairns are immersed in a dynamic learning environment with opportunities available for study, work, and play. With academic staff committed to student support and success, and a careers team ready to assist both during study and after graduation, students at JCU Cairns have a world of experiences available to them.

In addition, there is a large number of academic and sporting clubs on offer.

JCU Cairns, Nguma-bada campus, Smithfield is conveniently located just north of the city centre. Uniquely juxtaposed between urban settings and natural wonders, the campus is surrounded on three sides by rainforest-covered mountains and is close to the northern beaches. Students enjoy a tranquil learning environment due to the abundance of lush greenery and spacious areas.

Located in Cairns CBD, JCU Cairns, Bada-jali campus, City offers a range of flexible study, teaching, and meeting areas. It features North Queensland's first 'moot court' with e-court facilities providing practical training for law students. Access to videoconferencing and catering facilities in the boardroom gives staff and students opportunities to meet and network with businesses and the local community.

Studying in Cairns provides access to two World Heritage listed natural environments – the Great Barrier Reef Marine Park and the Wet Tropics ancient rainforests. Students can develop specialised skills during field trips and expeditions to distinctive research locations.

The variety of natural wonders coupled with a tropical climate make Cairns an ideal place for active outdoor living. The city is a great base for exploring the nearby resort regions of Port Douglas and Mission Beach, the picturesque Atherton Tablelands, and outback Queensland.



Cairns city, overlooking Trinity Bay.

Cairns fast facts

Cairns is a gateway to the Great Barrier Reef, the Wet Tropics rainforests in the Daintree National Park, the Atherton Tablelands, and the Gulf Savannah region, so you'll never run out of places to enjoy and explore.



Climate

Wet season (November–May)

24°–32°C/75°–90°F

Hot, rainy and humid

Dry season (June–October)

17°–26°C/63°–79°F

Mild and dry

Food

Easy access to an abundance of fresh local food and cuisines from around the world.

Population

253,748 (city), 2,833 (JCU)

Transport

Bus to and from campus, car, bicycle (extensive network of bike tracks throughout Cairns), international airport.

Places of worship

JCU's Multifaith Chaplaincy Centre is available as a free facility for you to practise your faith.

Medical

On-campus dental clinic, as well as a hospital, medical clinics, psychology clinics, and more off campus.

Campus

JCU Cairns, Nguma-bada campus, Smithfield, near the popular northern beaches and approximately a 20-minute drive from the city centre. Study facilities can also be accessed at the JCU Cairns, Bada-jali campus, City.

On-campus sport

Gymnasium, basketball courts, sporting fields, and a world-class mountain bike track.

Sources: ABS 2021 Census (area 306);
2022 JCU numbers from COGNOS 27/11/2023

JCU Brisbane

With a picturesque river precinct and an array of cultural and entertainment options, Brisbane is regarded as one of the most liveable cities in the world. JCU Brisbane students receive a world-class education in Australia's fastest growing capital city for employment.



The Goodwill Bridge, a pedestrian and cycle bridge that spans the Brisbane River, connects the South Bank Parklands to the city centre

Our locations

JCU Brisbane

Conveniently located in a modern high-rise building in the heart of Brisbane's CBD, at JCU Brisbane students can explore a wide range of courses and find a study area that suits them.

The campus features interactive learning spaces, comfortable student lounges and a resource centre where they can network with university staff and fellow students from over 88 countries.

Students have access to dedicated support services including opportunities for enhanced job-support, academic learning advisors, counselling, employment assistance, and English language and academic pathways.

There are also many clubs and societies you they join at JCU Brisbane, including sporting, recreational, academic and social groups. They're a great way to meet new people, learn new skills and have fun while studying.



Brisbane fast facts

Brisbane is the capital of Queensland and the third largest city in Australia.

One of the more affordable cities in Australia, Brisbane is known for being safe and friendly.



Climate

Summer (December–February)

21°–30°C/69°–85°F

Warm with rainy periods

Winter (June–August)

11–21°C/51.6°–69.8°F

Dry and mild

Food

Easy access to an abundance of fresh local foods and cuisines from around the world.

Population

2,526,238 (city), 715 (JCU)

Transport

Bus services are available from Queen Street. Central Train Station is a 7-minute walk, and is 1 km to the riverfront.

Places of worship

A prayer room is available on campus for student use.

Medical

There are hospitals, medical clinics, psychology clinics and more off campus.

Campus

JCU Brisbane is located in Brisbane's CBD.

Research excellence

 JCU Singapore

A defining feature of JCU is its research excellence in disciplines of particular relevance to the Tropics.

Excellence in Research for Australia (ERA) rated JCU's research in 83 per cent of fields as world-class or above, including every field of research in medical and health sciences at JCU¹.

JCU received the highest possible rating, well above world standard, in eight research areas:

- Environmental science and management
- Ecology
- Geology
- Ecological applications
- Plant biology
- Medical microbiology
- Fisheries sciences
- Organic chemistry

This now makes JCU the only Australian university to be recognised by ERA at the highest level in every assessment within the environmental science and management research category since 2010.

JCU Singapore

- Centre for International Trade and Business in Asia
- Tropical Futures Institute

JCU Cairns

- Advanced Analytical Centre
- Australian Institute of Tropical Health and Medicine
- Australian Tropical Herbarium
- Cairns Institute
- Centre for Molecular Therapeutics
- Centre for Tropical Bioinformatics and Molecular Biology
- Centre for Tropical Environmental and Sustainability Science
- Indigenous Education and Research Centre
- JCU Ideas Lab
- Language and Culture Research Centre
- World Health Organisation Collaborating Centre for Nursing and Midwifery Education and Research Capacity Building

JCU Townsville

- Agriculture Technology and Adoption Centre
- AIMS@JCU
- Anton Breinl Research Centre for Health System Strengthening
- Australian Institute of Tropical Health and Medicine Boating and Diving
- Australian Research Council Centre of Excellence for Coral Reef Studies
- Australian Research Council Industrial Transformation Research Hub for Advanced Prawn Breeding
- Centre for Disaster Studies
- Centre for Nursing and Midwifery Research
- Centre for Sustainable Tropical Fisheries and Aquaculture
- Centre for Tropical Water and Aquatic Ecosystem Research
- Comparative Genomics Centre
- Cooperative Research Centre for Developing Northern Australia
- Cyclone Testing Station
- Economic Geology Research Centre
- eResearch Centre
- Indigenous Education and Research Centre
- Marine and Aquaculture Research Facility
- Queensland Research Centre for Peripheral Vascular Disease
- World Health Organisation Collaborating Centre for Vector-borne and Neglected Tropical Diseases

¹ Excellence in Research for Australia (ERA) 2018



Daintree Rainforest
Observatory

Orpheus Island
Research Station

JCU Cairns

JCU Townsville

Centre for Rural and
Remote Health
Mount Isa

Fletcherview Research
Station

JCU Brisbane

Research centres

JCU is equally committed to high quality and high impact research. To realise these outcomes, the University has invested substantially in structures and facilities to support research and development activity.

JCU Daintree Rainforest Observatory

The JCU Daintree Rainforest Observatory (DRO) is located in lowland tropical rainforest at Cape Tribulation, 140 kilometres (87 miles) north of Cairns. It is a unique part of the world, where the reef meets the rainforest and two World Heritage areas lay side by side.

Wet Tropics rainforests have the highest biodiversity of anywhere in Australia, supporting 800 species of vertebrates and over 5,000 plant species. Flora and fauna endemic to the region attract researchers from across the globe.

JCU's canopy crane makes it possible to view the rainforest from above the canopy, through its different levels, and down to the soils and subterranean water resources. The crane allows students to use complex scientific equipment to observe ecological, physiological, and atmospheric processes in-situ.

JCU DRO offers accommodation, one open-air teaching laboratory, and one traditional air-conditioned laboratory. The facility also houses an extensive insect collection and herbarium for visitors.

jcu.edu.au/dro

JCU Fletcherview Research Station

JCU's Fletcherview Research Station focuses on tropical agriculture and veterinary science. The massive 1,960 hectare working cattle station is 98 kilometres (60 miles) southwest of Townsville, in a major cattle producing area.

Students studying tropical agriculture and veterinary science obtain a hands-on practical experience associated with grazing in the Dry Tropics. Fletcherview also supports study in biology and botany, and field trips to examine the unique geomorphology and geology of its lava flows.

jcu.edu.au/fletcherview

JCU Orpheus Island Research Station

The JCU Orpheus Island Research Station is located on the western side of Orpheus Island with ready access to pristine inshore reefs and islands. A known 1,100 species of fish and 340 of the 350 known species of reef coral can be found in the underwater gardens of the surrounding reefs.

Exploring the waters off Orpheus Island reveals a number of different types of submerged historic sites. From Indigenous sites to recent shipwrecks, this research station is also a base for training in search and survey techniques. Marine Biology students regularly visit Orpheus Island to study the diverse fauna, particularly on the sand and rubble intertidal reef flat, as well as investigating fauna associated with the mangrove community.

Scientific resources on the island include climate-controlled research rooms, wet laboratories, a versatile saltwater aquarium system, and six aquarium raceways.

jcu.edu.au/oirs

Indigenous Education and Research Centre

The JCU Indigenous Education and Research Centre (IERC) provides education research and engagement services for Aboriginal and Torres Strait Islander students based at JCU in Townsville, Cairns, Mackay, Mount Isa and Thursday Island, and for those studying externally around Australia.

It empowers students to be independent, critical and analytical thinkers, with assistance to plan, set and achieve goals. Services include mentor and peer-support programs, learning support and free study sessions in reading, writing and maths. These services aim to accelerate learning for Indigenous students and are provided in addition to the usual teaching and learning support available at JCU.

jcu.edu.au/ierc

JCU Advanced Analytical Centre

The JCU Advanced Analytical Centre (AAC) is a central analytical facility, providing a range of analytical instrumentation.

The AAC is supported by highly experienced staff and has projects ranging from the analysis of the oldest rocks on Earth to corrosion of medical implants, and reef ecosystems to archaeological artefacts. The AAC provides access to a number of techniques covering the fields of microscopy and microanalysis, inorganic and organic chemical analysis, mineralogy/crystallography, and genetic analysis.

jcu.edu.au/aac

AIMS@JCU

AIMS@JCU is a strategic alliance between JCU and the Australian Institute of Marine Science (AIMS). It integrates strengths, synergies, infrastructure, and expertise in world-class tropical marine research capacity.

AIMS is the Australian Government's tropical marine research agency. AIMS@JCU is strategically focused on the AIMS research plan, which addresses national and international research priorities and skills gaps, to advance the global knowledge required to understand and sustainably manage marine resources. AIMS@JCU makes a significant contribution to training the next generation of marine science leaders equipped with expertise of most relevance to meet real-world challenges.

aims.jcu.edu.au/





The Ideas Lab, JCU Cairns, Nguma-bada campus, Smithfield.

Research centres

ARC Centre of Excellence for Indigenous and Environmental Histories and Futures (CIEHF)

CIEHF aims to generate a new direction in knowledge creation based on Aboriginal and Torres Strait Islander led approaches to managing Land and Sea Country.

The Centre expects to make a legacy contribution by developing complementary Indigenous and Western knowledge frameworks for modelling environmental, cultural, and historical change in Australia over the last millennium and into the near future. Expected outcomes focus on sustainable Indigenous land and sea management planning for future decades. Benefits include improved forecasting of the trajectory of environmental change, an increase in the capacity of Indigenous research, creation of a pipeline for Indigenous students into research, and evidence-based policy-making.

ARC Centre of Excellence for Australian Biodiversity and Heritage (CABAH)

CABAH's vision is to reveal a culturally inclusive, globally significant history of Australia's people and their environment that is both ambitious and exciting.

CABAH's research programs include flagship projects that are built from the ground up, driven by Indigenous communities, on whose lands we are all guests. They have the potential for impact on a large scale and will be the genesis of decades of research in key areas of Australia and our geographical neighbours to the north.

epicaustralia.org.au

ARC Research Hub for Advanced Prawn Breeding

The goal of the Hub for Advanced Prawn Breeding is to develop and transfer to the farmed black tiger prawn industry the capacity to benefit from advanced genomic-informed breeding programs.

The Hub aims to develop comprehensive genomic resources for the black tiger prawn including a draft genome. Research also includes acquiring necessary quantitative genetic information for traits along with the development of industrial-scale disease testing and phenotypic data collection processes.

The Australian Research Council Industrial Transformation Research Hub (ARC ITRH) for Advanced Prawn Breeding is a consortium involving researchers and industry from JCU, CSIRO, Australian Genome Research Facility, University of Sydney and Seafarms Group.

jcu.edu.au/prawn-breeding-hub

JCU Australian Institute of Tropical Health and Medicine

JCU AITHM's programs encompass public health, biomolecular, clinical, translational, and health systems research, focused on the health issues of most importance to tropical Australia.

Through its research and innovation, and in partnership with key community organisations and health service providers, JCU AITHM aims to fill a major gap that exists at the interface between cutting edge research and scientific expertise, and health service, workforce and policy delivery.

aithm.jcu.edu.au

JCU Cairns Institute

JCU Cairns Institute brings together the expertise and intellectual resources of more than 20 disciplines in humanities and social sciences, creating a vibrant hub for research, capacity building and public debate, relevant to tropical societies.

Its location in tropical North Queensland and proximity to neighbouring countries in the Pacific and Southeast Asia offers unique opportunities to enhance human life in the Tropics and contribute to a brighter, more equitable, and enriching future for its peoples.

jcu.edu.au/cairnsinstitute

JCU eResearch Centre

JCU eResearch Centre's multidisciplinary approach aims to advance tropical knowledge and harness the power of technology and data.

Current projects include the development of a Tropical Data Hub, the implementation of a comprehensive environmental monitoring system at JCU's Daintree Rainforest Observatory, and the Smart Environment Monitoring and Analysis Technologies (SEMAT) project.

eresearch.jcu.edu.au

JCU Ideas Lab

JCU Ideas Lab is a research and development hub for innovators to create, connect and collaborate.

Students, researchers and the broader community use this space to develop as innovators and entrepreneurs. With state-of-the-art facilities and cutting edge technology, JCU Ideas Lab equips innovators to develop products and processes and take their ideas to the next level.

jcu.edu.au/jcu-ideas-lab

JCU Marine & Aquaculture Research Facility (MARF)

MARF is JCU's central facility for research and testing in aquaculture, marine biology, and algal studies.

At any one time, the facility supports a diverse portfolio of research projects including projects on various species of fin fish, coral, algae, crustaceans, squid, holothurians, molluscs and bivalves.

Located at the JCU Townsville, Bebegu Yumba campus, Douglas, MARF features eight large recirculating marine water systems supplying outdoor, undercover, and indoor lab areas as well as 21 indoor temperature-controlled research labs, 11 of which have their own dedicated recirculating life support systems for high-resolution or specifically modified research projects.

jcu.edu.au/marf

Study centre network

Our university campuses are supported by a network of study centres, clinical schools and field stations. This geographical spread helps us further our commitment to help regional and remote communities gain access to high quality education.

JCU Mackay

JCU Mackay has two campuses – one at the JCU Mater Clinical Training Centre in the Mater Hospital and another at the JCU Mackay Clinical School, within the Mackay Education Research Centre of Mackay Base Hospital.

Together, these campuses have been named Ngudya Yamba, meaning 'place of knowledge' in the Yuwi language.

These practical learning facilities provide students with opportunities for hands-on clinical experience in nursing and pharmacy.

JCU Mount Isa

JCU's Centre for Rural and Remote Health at the Mount Isa, Murtupuni campus provides access to health education for the remote west region of Queensland. In the Kalkadoon language, murtupuni means 'come together, gather together'.

Students can study a Bachelor of Nursing Science based in Mount Isa, or complete a clinical placement in the region as part of other health studies. The centre facilitates research and education for rural, remote and Indigenous health issues and provides students with unique rural experiences. Students can learn in lectures delivered by experts from all over Queensland, and connect with experienced local health professionals in tutorials.

JCU Thursday Island

JCU is committed to research that improves the health of people and communities in the Tropics worldwide.

The Australian Institute of Tropical Health and Medicine at the Thursday Island, Ngulaigau Mudh campus is one place that makes this commitment possible. Ngulaigau mudh means 'house of knowledge' in the dialect of the Kala Lagaw Ya, a traditional language of the Torres Strait.

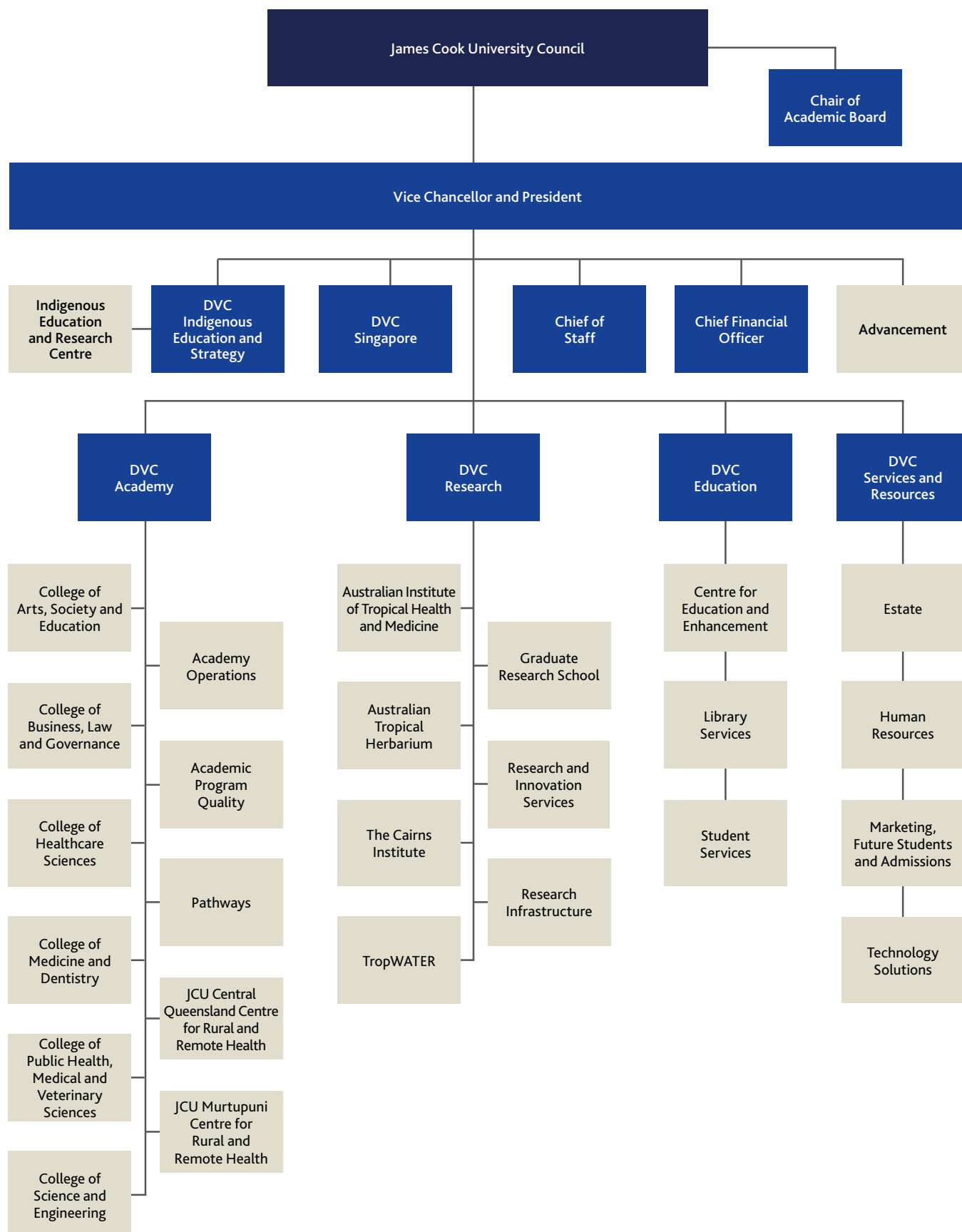
The facility provides both learning and research facilities for JCU students, and a community space for engagement and collaboration with the Torres Strait community.





'Take Time' by Adnate, one of the 50 Bridges murals celebrating 50 years of diplomatic relations between Australia and Singapore, JCU Singapore campus

Organisational structure



JCU Facilities

Being ready today for tomorrow at JCU is lived by the ongoing transformation of physical learning, teaching, research and accommodation facilities across our tropical campuses through the Campus Renewal Project.

JCU's Science Place on the JCU Townsville, Bebegu Yumba campus, Douglas opened in 2017, and became the first education building in Australia to achieve a LEED Gold rating.

John Grey Hall, the first on-campus accommodation facility for JCU Cairns, opened in 2018 and is a short walk to the centre of the Nguma-bada campus, Smithfield. The \$40m facility provides up to 300 students with a variety of accommodation options and views looking out over the campus to the ocean in one direction and onto lush, tropical hillsides in the other.

The unique Verandah Walk that weaves through the centre of JCU Townsville, providing sheltered walkway access to major buildings as well as study, relaxation and meeting spaces for students and staff, received the 2019 Australian Institute of Landscape Architects (AILA) National Award of Excellence – Urban Design.

TropiQ, Townsville's health and knowledge precinct, connecting the JCU Townsville, Bebegu Yumba campus, Douglas to the Townsville University Hospital, was established in 2019. The precinct is expected to contribute an extra \$1 billion dollars a year to the North Queensland economy by 2035.

The JCU Ideas Lab, home to innovation and digital transformation on the JCU Cairns, Nguma-bada campus, Smithfield opened in late 2020. The JCU Ideas Lab, a \$30m innovation, teaching and learning facility connects students, staff and industry together in an environment designed to encourage bringing the region's best ideas to life.

More than \$150m in funding has been provided by the Federal Government's Northern Australia Infrastructure Facility (NAIF) loan scheme, to assist JCU in continuing on our program of transformation.

Completed in 2022, the new student accommodation facility at JCU Townsville provides more than 400 students contemporary, affordable on-campus accommodation. The seven story building features study bedrooms in group share accommodation, high-quality communal living spaces and a centralised, self-catered Masterchef-style kitchen and dining space.

JCU Townsville will also soon be home to the new Engineering and Innovation Place (EIP). The facility will support business and the community by offering students, staff and industry partners access to leading-edge STEM innovation, research and educational facilities. The EIP facility will join the JCU Ideas Lab in Cairns as the combined home for innovation and digital transformation at JCU.



History of JCU

From ground-breaking research and discoveries to milestones in education, JCU is continually growing and forging a brighter future for the Tropics.

1950s

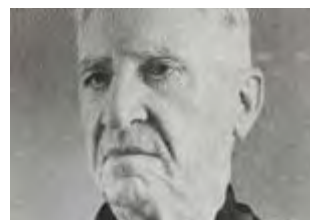
The beginning

12 October 1958. The Queensland Minister for Education, The Honourable Jack Pizzey, announces the Queensland Government will open a University College in Townsville.

1957

A regional university is proposed

Professor J.D Story, Vice Chancellor of the University of Queensland proposes a regional university college be established.



1960s

A strong foundation

In 1960, the State Cabinet announces that a University College will be established in Townsville. In 1961, the University College of Townsville was officially opened. On 2 March 1964, John Hayes becomes the first student to graduate, receiving a Bachelor of Arts.



1966

Foundation for Australian Literary Studies begins

Professor Colin Roderick establishes the Foundation for Australian Literary Studies, as well as inaugurating a lecture series and an annual book award. The Colin Roderick Award is valued at \$20,000 and recognises the best Australian book of the year that deals with any aspect of Australian life.



1970s

A royal visit and the first JCU graduates

Queen Elizabeth II officiated the establishment of JCU on 20 April 1970. Following the passing of the James Cook University of North Queensland Bill 1969. The first cohort to fully study at JCU graduates in 1973.



Celebrating 50 years

1977

Cyclone Testing Station established

The Station aims to minimise the loss and suffering caused by cyclones and other high wind events, as well as providing advice to governments, manufacturers, and property owners. The Station is founded in response to the destruction caused by Cyclone Althea to Townsville in 1971 and Cyclone Tracy to Darwin in 1974.



1980s

Moving north and Queen's Birthday Honours

JCU Cairns opens its doors and the University celebrates 25 years in Townsville. Vice-Chancellor Professor Ken Back is made an Officer of the General Division of the Order of Australia in the Queen's Birthday Honours list in 1984.



1981

Land rights challenge

The politically active JCU Student Union organises the *Land Rights and the Future of Australian Race Relations Conference* at the Douglas campus, putting future events in motion. After speaking at the conference, Eddie Koiki Mabo leads a group of Mer Islanders in taking their case to court; they will go on to challenge Crown ownership of Mer.



1990s

The Mabo Legacy and broadening educational horizons

In 1992, Eddie Koiki Mabo passes away just months before the *Mabo v Queensland* case is decided. The High Court's historic decision overturned the legal doctrine of *terra nullius*. In 1992, JCU Mackay opens. In 1995 JCU Cairns relocates to its current Smithfield site. In 1997, JCU Mount Isa is established as a centre for population health, education and research.



1990

First cohort of nurses

JCU accepts its first cohort of nurses. The Department of Nursing was the University's first undergraduate health science department and the first university school of nursing in the Tropics in Australia. In 1991 JCU constructed a dedicated Nursing Science building.



Visit jcu.edu.au/timeline to explore more events in JCU's rich history.

2000s

Growth and opportunity

JCU opens a Medical School in 2000, commences operations in Singapore in 2003, and is named in the top 500 Universities in the World in the Shanghai Jiao Tong world ranking.



2008

JCU Library named after Eddie Koiki Mabo

JCU launches its Reconciliation Statement and names the Townsville campus library the "Eddie Koiki Mabo Library" in recognition of the significant contribution he made for Australian Aboriginal and Torres Strait Islander Land Rights.



2010s

Reconciliation in action

A May 2013 commitment by the JCU Vice Chancellor led to the development of the first Reconciliation Action Plan. The Indigenous Education and Research Centre launches.



2012

20th anniversary of the historic Mabo Decision

JCU commemorates the 20th anniversary of the historic Mabo Decision with a series of events including a public lecture titled **Mabo - 20 Years on. Did it change the Nation?** The lecture was presented by Professor Henry Reynolds who, along with fellow-academic Noel Loos, built a relationship with Dr Mabo at JCU Townsville in the 1970s.



2014

First State of the Tropics report

State of the Tropics is a global alliance of institutions working towards a brighter future for the Tropics. After discussions beginning in 2011, the first State of the Tropics report is released in 2014. In 2016, the United Nations General Assembly declares 29 June of each year be observed as the International Day of the Tropics.

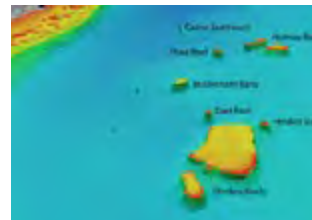


Celebrating 50 years

2015

3D satellite mapping of reefs

JCU researchers in Cairns complete detailed 3D depth maps of Australia's Coral Sea reefs, shedding new light on the likely distribution of coral diversity and sea life in the area. Dr Robin Beaman said mapping the reefs and their underwater landscape had always been a challenge, because their remote locations and shallow nature made it difficult to use modern surveying techniques.



2017

JCU recognised as No. 1

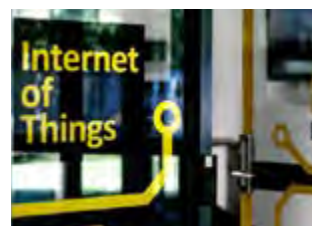
JCU is recognised as number one in the world for Marine and Freshwater Biology and number two in the world for Biodiversity Conservation by the Center for World University Rankings (CWUR).



An Australian first at JCU

JCU launches Australia's first Internet of Things degree in 2016, and in 2017 opens Australia's first NarrowBand Internet of Things (NBloT) research lab in Cairns.

"The Internet of Things is based on something that is central to our mission in the Tropics: building a greater connectivity between people, place, and technology," JCU Vice Chancellor Professor Sandra Harding said.



2020s

A celebration

For over fifty years, JCU graduates have helped shape the future in classrooms, in hospital wards, and throughout communities, both in Australia and internationally. After being postponed for a year due to COVID-19, graduation ceremonies proceeded in both Cairns and Townsville.



2021

Eddie Koiki Mabo awarded Honorary Doctorate

The late Eddie Koiki Mabo is awarded an Honorary Doctorate in recognition of his outstanding service and distinguished public campaign to improve the rights and wellbeing of his people. Chancellor Bill Tweddell is pictured with Dr Mabo's daughter, Gail, who accepts the doctorate on behalf of her late father.





Key statistics

| Category | Metric | 2020 | 2021 | 2022 | % Change 2021-2022 ¹ |
|---------------------------------------|---|-------------|-------------|-------------|------------------------------------|
| Students | Total Student Enrolments | 20,272 | 20,308 | 19,921 | -1.9% |
| | Total EFTSL | 14,423 | 14,029 | 14,033 | 0.0% |
| | International Student Enrolments | 6,372 | 5,721 | 6,588 | 15.2% |
| | International EFTSL | 5,570 | 5,025 | 5,737 | 14.2% |
| | Domestic Student Enrolments | 13,900 | 14,587 | 13,372 | -8.3% |
| | Domestic EFTSL | 8,853 | 9,004 | 8,296 | -7.9% |
| | Townsville EFTSL | 7,495 | 7,114 | 6,767 | -4.9% |
| | Cairns EFTSL | 1,911 | 1,769 | 1,677 | -5.2% |
| | Singapore EFTSL | 3,551 | 3,878 | 4,346 | 12.0% |
| | Brisbane EFTSL | 716 | 273 | 388 | 42.1% |
| | JCU Online EFTSL | 669 | 895 | 734 | -17.9% |
| | Other Study Centres EFTSL | 81 | 101 | 121 | 20.5% |
| Student Equity & Diversity | % Aboriginal and Torres Strait Islander | 5.5% | 5.6% | 5.3% | -5.4% |
| | % Low Socioeconomic Status | 21.7% | 22.0% | 23.0% | 4.5% |
| | % Female | 61.7% | 62.9% | 62.8% | -0.2% |
| | % Non-English Speaking Background | 29.2% | 27.9% | 30.0% | 7.5% |
| | % International | 31.5% | 28.2% | 33.0% | 17.2% |
| | % Mature Age (25 years and older) | 44.8% | 46.0% | 44.3% | -3.6% |
| | % Disabled | 6.1% | 5.9% | 6.3% | 6.8% |
| Research | Higher Degree Research EFTSL | 550 | 545 | 549 | 0.8% |
| | Higher Degree Research Completions | 113 | 108 | 126 | 16.7% |
| Staff ¹ (for JCUA only) | Total Staff Headcount | 3966 | 4119 | 4173 | 1.3% |
| | Total Staff FTE | 1964 | 1961 | 1997 | 1.8% |
| | Academic Staff FTE | 815 | 821 | 843 | 2.7% |
| | Professional and Technical Staff FTE | 1149 | 1140 | 1153 | 1.1% |
| Financial ^{2,3} | Total Revenue (Consolidated), \$'000 | \$546,891 | \$559,192 | \$529,196 | -5.4% |
| | Total Expenses (Consolidated), \$'000 | \$522,675 | \$533,674 | \$572,860 | 7.3% |
| | Total Equity (Consolidated), \$'000 | \$1,126,267 | \$1,200,828 | \$1,280,537 | 6.6% |
| | Total Revenue (Parent), \$'000 | \$476,465 | \$491,342 | \$447,003 | -9.0% |
| | Total Expenses (Parent), \$'000 | \$462,512 | \$472,733 | \$495,956 | 4.9% |
| | Total Equity (Parent), \$'000 | \$1,073,802 | \$1,143,002 | \$1,208,920 | 5.8% |

¹ JCU Tropical Australian Campuses only; excludes adjunct staff.

² 'Consolidated' includes the Parent Entity and other controlled entities including: JCU Early Learning Centres Pty Ltd; JCU Health Pty Ltd; JCU Univet Pty Ltd; and companies relating to JCU Singapore.

³ 'Parent Entity' is James Cook University.



Associate Vice-President, International

The Associate Vice-President, International leads the international recruitment, conversion, global mobility and partnership functions for all of the University, ensuring targets are met and tangible results are achieved to increase JCU's international market share for student engagement and activities. This position is based in Singapore.

Key Accountabilities and Deliverables

The Associate Vice-President, International is accountable for:

1. Achieving international student recruitment targets in Australia and Singapore through the development and implementation of growth strategies and performance management plans.
2. Increasing student conversion targets year on year through the development and implementation of growth strategies and performance management plans.
3. Increasing global mobility targets year on year through the development and implementation of growth strategies and management of international partners.
4. Increasing the benefits realised from the development and maintenance of international partnerships resulting in measurable outcomes for the University in terms of pipeline development, conversion and longevity.
5. Leading a diverse team to deliver upon their objectives, building a culture of high-performance, teamwork, wellbeing and innovation.
6. Representing the university in international education forums and committees as required.
7. Contributing to strategic objective setting and delivery as a member of the Marketing, Future Student and Admissions Leadership Team, role modelling defined cultural and values expectations.

Key Requirements for success

1. Post-graduate qualifications and experience in line with the appropriate Higher Education Worker Level as provided in the **Enterprise Agreement**.
2. Proven experience operating at a strategic level in the areas of international partnerships, student recruitment and mobility and compliance with accountability for performance and quality management.
3. Extensive management and leadership skills, including demonstrated ability to effectively manage human, financial and physical resources across a large and diverse team.
4. Advanced communication skills using analytical and problem-solving abilities to articulate concepts and present complex analysis with clarity and professionalism.

How to apply

For more information and to submit your application please visit the JCU Singapore website at <http://careers.jcu.edu.sg/cw/en/listing>.

JCU



**JAMES COOK
UNIVERSITY**
AUSTRALIA

jcu.edu.au